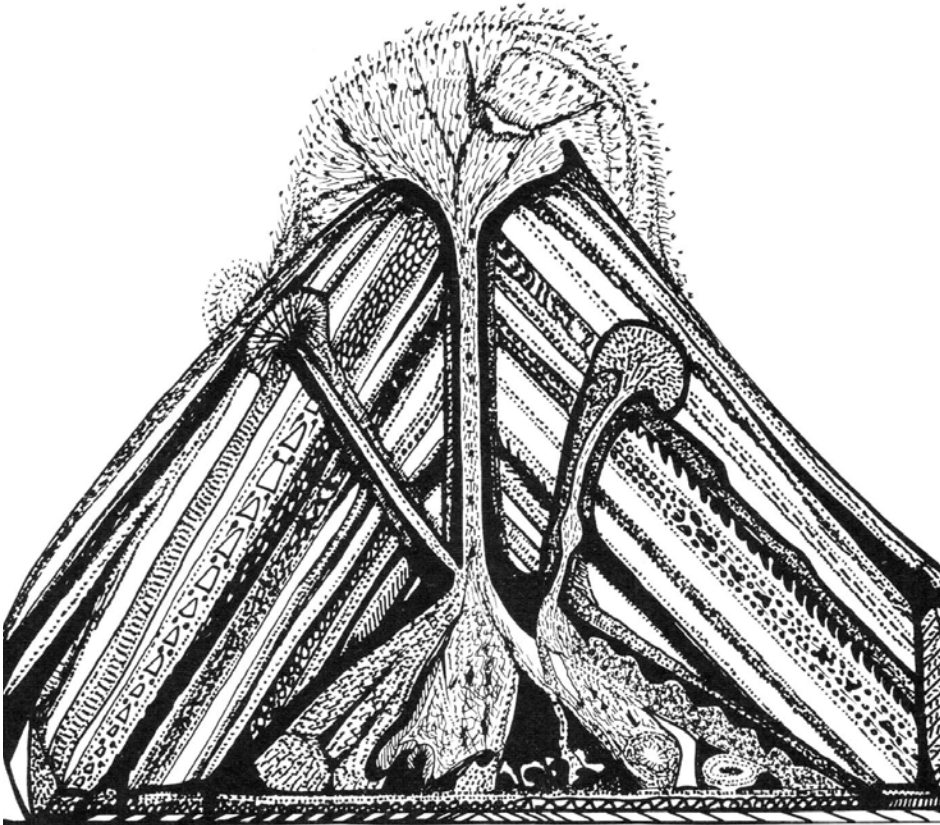


# An Epilogue



Melanesian tradition and scientific accuracy are combined comfortably in this artwork by the late Cecil King Wungi, depicting the internal architecture of a volcano. The image was published originally in 1976 on the cover of a handbook for the Geology Department, University of Papua New Guinea. Wungi worked as a laboratory technician in the department during the 1970s.

Source: C. K. Wungi. Used with permission of the Wungi family.