



Wilding family, May 1886. Front row, from left: Julia, Anthony, baby Frank held by nurse (?). Back row: Gladys and Frederick.

Source: Wilding Collection, CMDRC, 1989.147.297



The Macmillan Brown family at Holmbank, c. 1899. From left: Millicent, Helen, Viola and John, with their gardener in the background and a maid on the balcony above.

Source: MB 118-12940



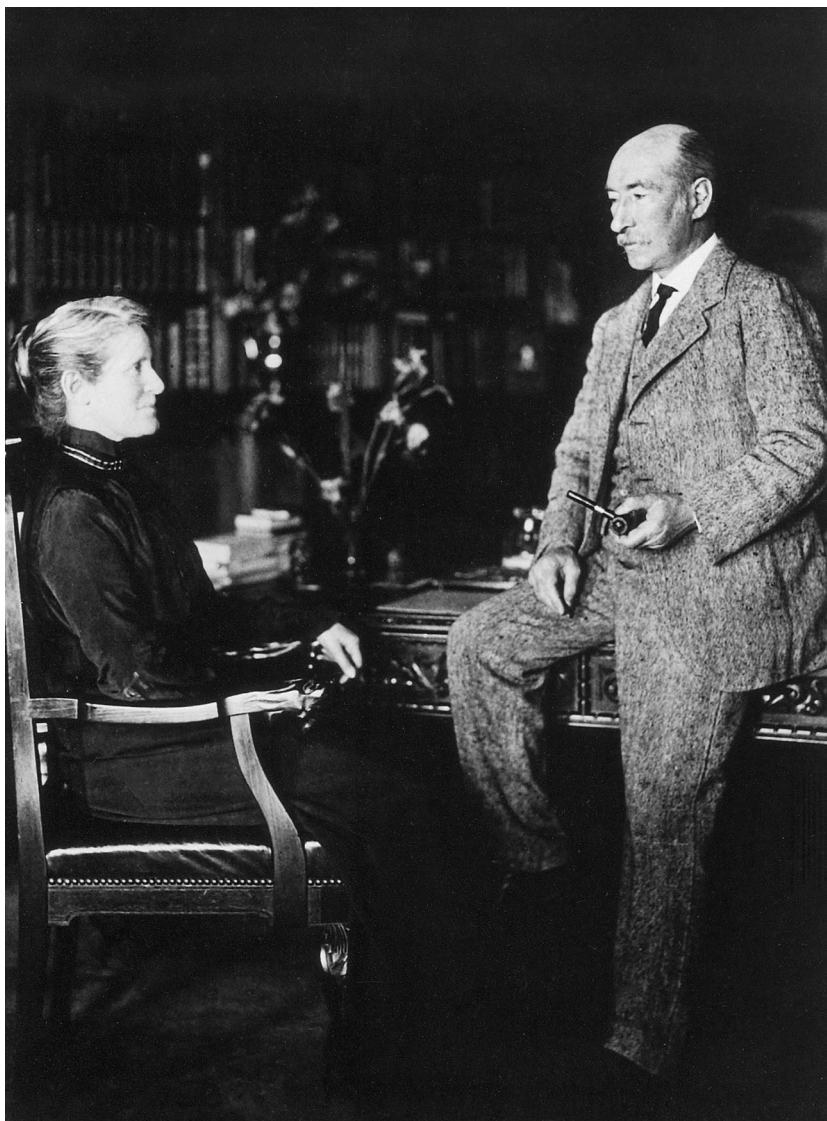
Helen Connon in BA graduation robes, July 1880. The white camellias symbolise 'excellence in women'.

Source: P. Schourup, MB 118-13429



Mary Alice Morrison Higgins on her wedding day, 19 December 1885.

Source: Stonnington History Centre, Malvern, MP 12541



Henry Bournes Higgins and his wife, Mary Alice Higgins, c. 1920.

Source: Stonnington History Centre, Malvern, MP 12543



Masson family, Chanorrv, University of Melbourne, Christmas 1902.

From left: Mary, Elsie, Irvine, Marnie and Orme.

Source: T. Humphrey & Co., UMA, BWP/7328



*Alexander Leeper as a young married man  
in his thirties, in the 1880s*

Alexander Leeper in the 1880s.

Source: Valentine Leeper Collection, Trinity College Archives, University of Melbourne  
(Cited by John Poynter, *Doubts and Certainties: A Life of Alexander Leeper*, Melbourne  
University Press, Carlton, 1997, p. 206.)



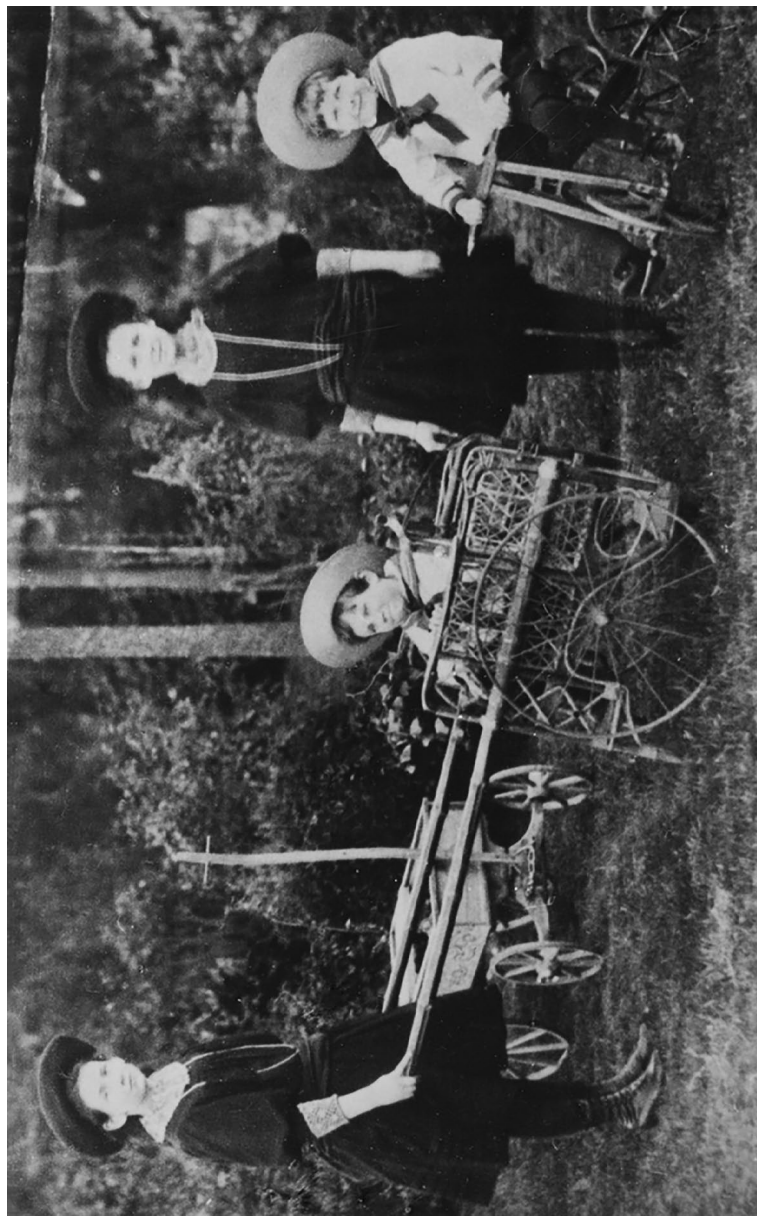


*Adeline Leeper as a young married woman  
in the 1880s*

**Adeline Leeper in the 1880s.**

Source: Valentine Leeper Collection, Trinity College Archives, University of Melbourne.  
(Cited by Poynter, *Doubts and Certainties*, p. 206.)





The children of Alexander and Adeline Leeper. From left to right: Kitty, Rex, Katha and Allen.

Source: UMA, BWP/7669



Mary Moule, September 1891. She became Alexander Leeper's second wife in 1897.

Source: Foster & Martin, Valentine Leeper Collection,  
Trinity College Archives, University of Melbourne



Mervyn Higgins, Irvine Masson and Robert Bage on holiday at Pentlands, Lorne, summer 1905-6.

Source: UMA, BWP/7327

This text is taken from *Family Experiments: Middle-class, professional families in Australia and New Zealand c. 1880–1920*, by Shelley Richardson, published 2016 by ANU Press, The Australian National University, Canberra, Australia.