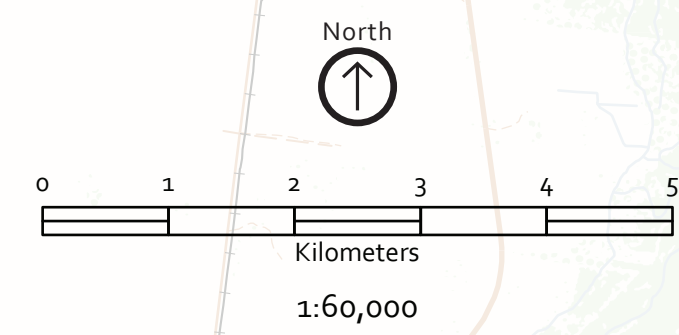


Yorta Yorta 2008 Use and Occupancy Map Survey George Nelson Map Biography



Map Produced by Ecotrust Canada – January 2009

BIRDS
Emu
Australian Wood Duck
Mountain Duck
Pacific Black Duck
Grey Teal

FISH
Trout Cod
Murray Cod
Golden Perch
Redfin Perch

REPTILES
Goanna
Turtle
Turtle Eggs
INVERTEBRATES
Yabbies
Crayfish
Witchetty Grubs
Native Bee Honeycomb

MAMMALS
Kangaroo
Rabbit

PLANT, WOOD AND EARTH MATERIAL
Medicine Plant
Ceremony Plant
Specialty Wood
Construction Wood
Firewood
Earth Material
Food Plant
Food Plant
Earth Material

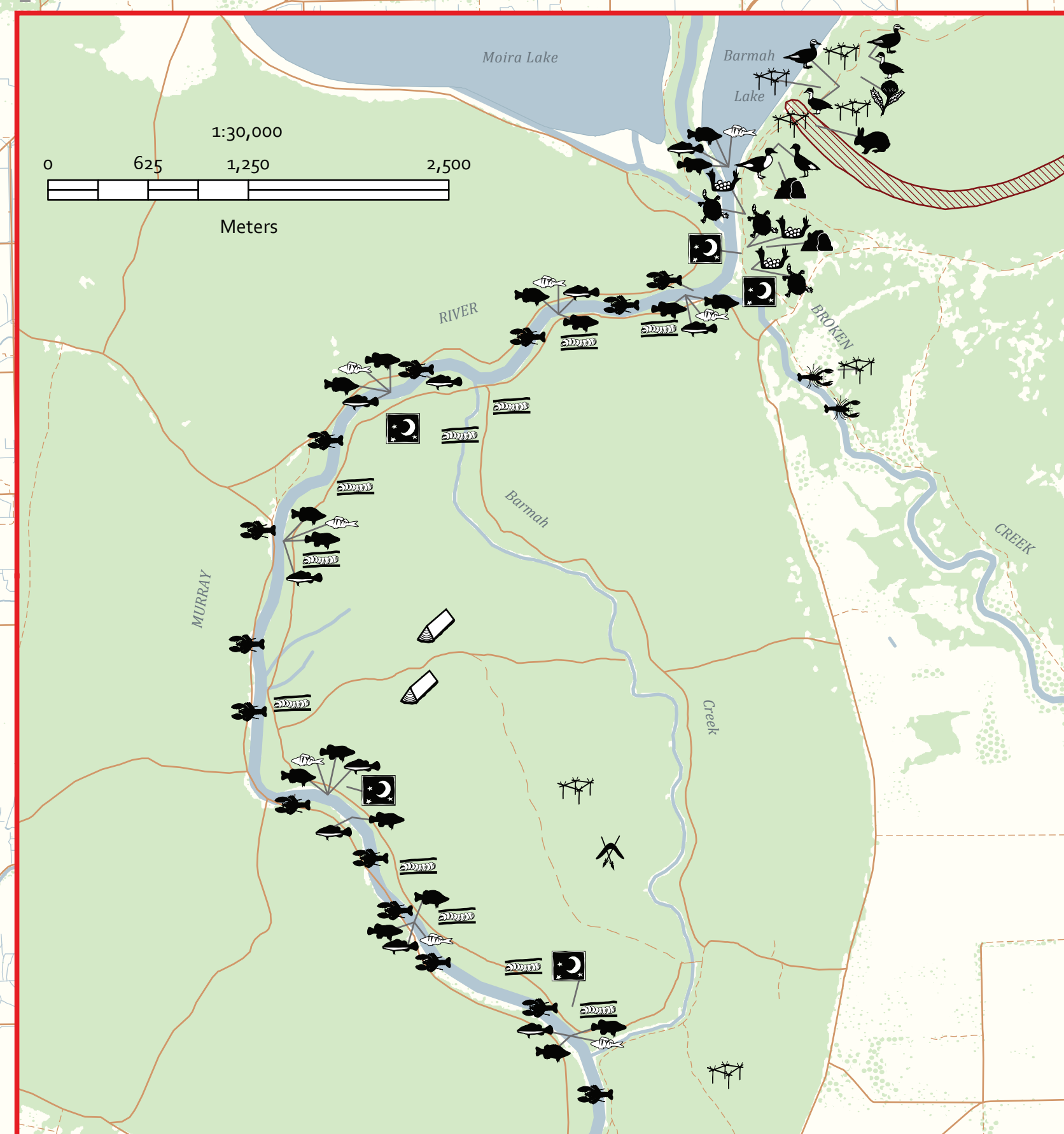
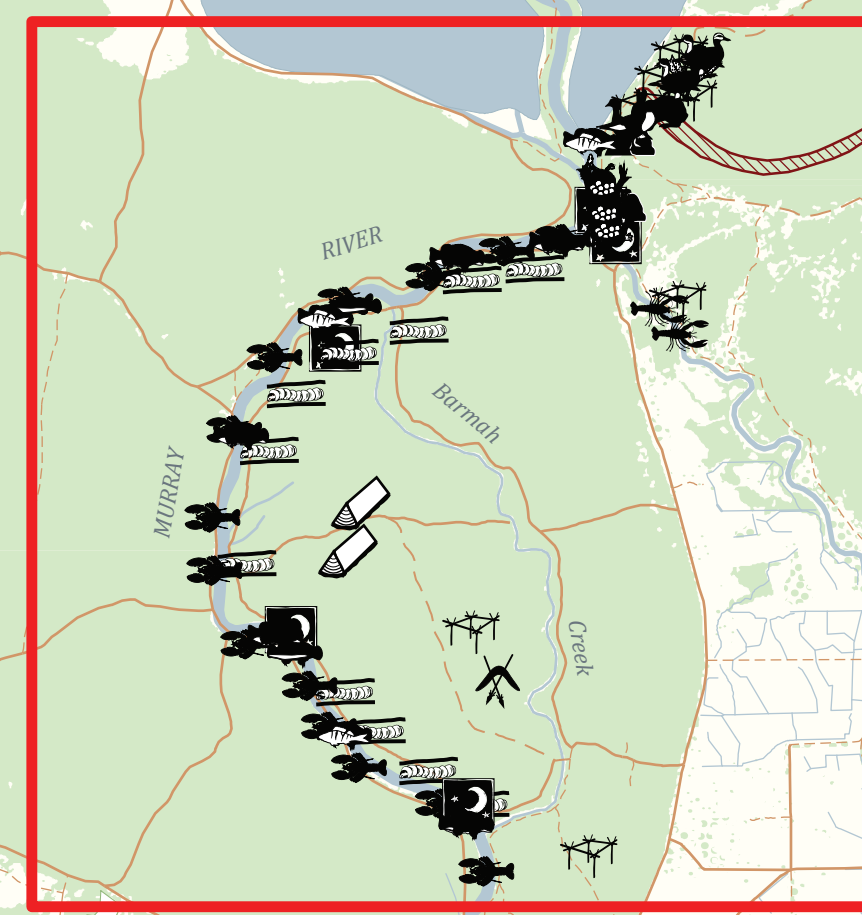
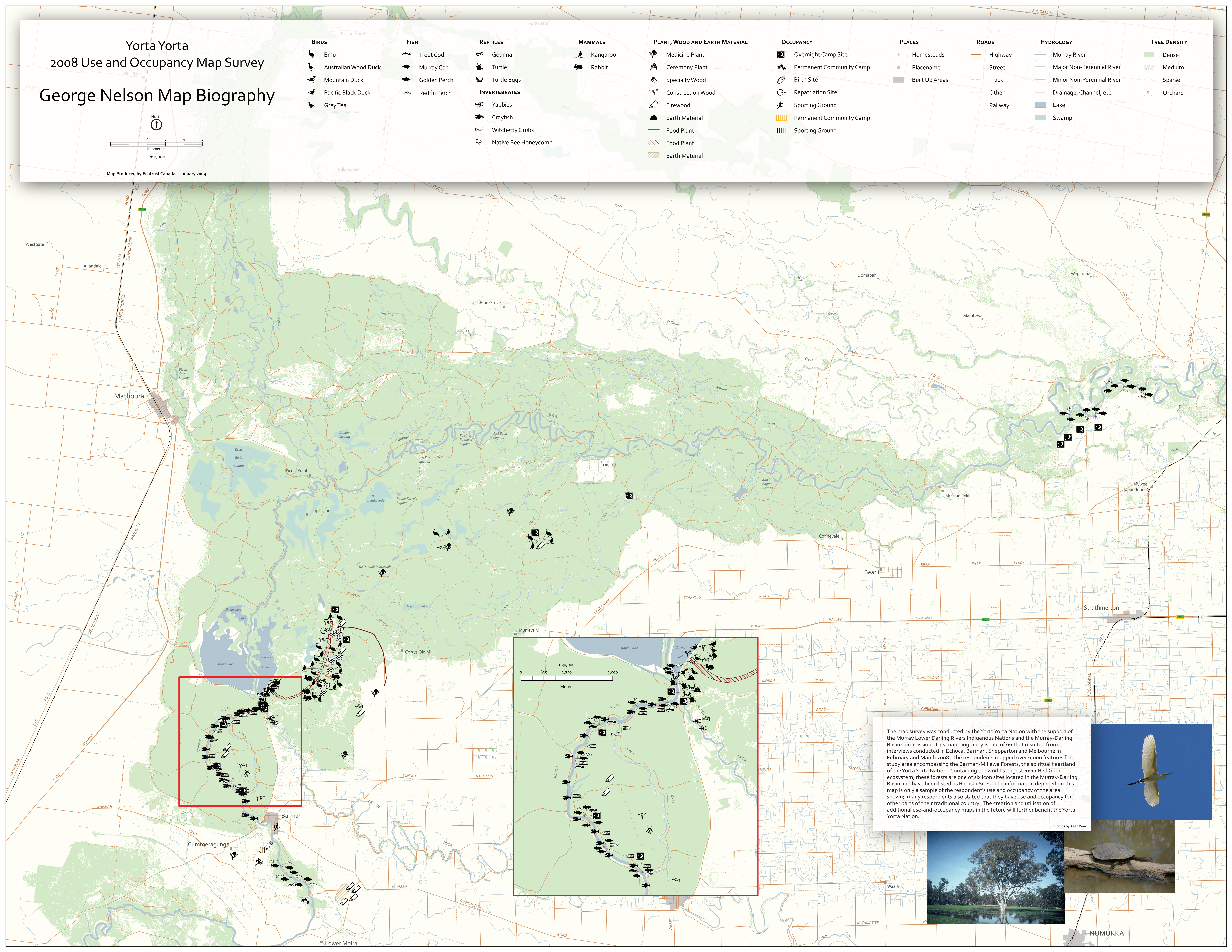
OCCUPANCY
Overnight Camp Site
Permanent Community Camp
Birth Site
Repatriation Site
Sporting Ground
Permanent Community Camp
Sporting Ground

PLACES
Homesteads
Placename
Built Up Areas

ROADS
Highway
Street
Track
Other
Railway

HYDROLOGY
Murray River
Major Non-Perennial River
Minor Non-Perennial River
Drainage, Channel, etc.
Lake
Swamp

TREE DENSITY
Dense
Medium
Sparse
Orchard



The map survey was conducted by the Yorta Yorta Nation with the support of the Murray Lower Darling Rivers Indigenous Nations and the Murray-Darling Basin Commission. This map biography is one of 66 that resulted from interviews conducted in Echuca, Barmah, Shepparton and Melbourne in February and March 2008. The respondents mapped over 6,000 features for a study area encompassing the Barmah-Millewa Forests, the spiritual heartland of the Yorta Yorta Nation. Containing the world's largest River Red Gum ecosystem, these forests are one of six icon sites located in the Murray-Darling Basin and have been listed as Ramsar Sites. The information depicted on this map is only a sample of the respondent's use and occupancy of the area shown; many respondents also stated that they have use and occupancy for other parts of their traditional country. The creation and utilisation of additional use-and-occupancy maps in the future will further benefit the Yorta Yorta Nation.

Photos by Keith Ward



NUMURKAH